

11 12 Levan #1

OFFICIAL BALLOT FOR LEVAN, UTAH NOVEMBER 4, 2025



[Signature]
Town Clerk

INSTRUCTIONS TO VOTERS: To vote for the candidate of your choice, fill in the oval ☒ next to the candidate's name. Use a black or blue ballpoint pen. If you tear, deface, or wrongly mark this ballot, contact the County Clerk's office.

Completely fill in the oval. ☒

Municipal Offices

Levan Town Mayor

Vote for One

- ☐ BRUCE CHARLES ROWLEY
- ☐ TYLER R SHEPHERD

Levan Town Council

Vote for up to Two

- ☐ RAY MCMILLAN EVANS
- ☐ NICHOLAS EROL MANGELSON
- ☐ JERRY HODGES SPENCER
- ☐ WRITE-IN

Use blank space below

NAME

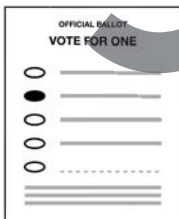
To vote for a write-in candidate, fill in the oval completely and write the first and last name of the candidate in the blank space above.

HOW TO MARK YOUR BALLOT

Completely fill in the oval and vote for up to the number allowed

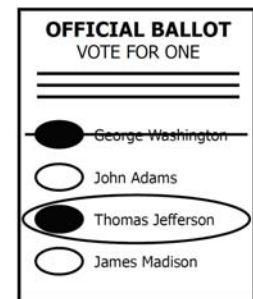
Avoid stray marks and ovals that are not completely filled

Do not sign, initial or make any identifying marks on your ballot



IF YOU MAKE A MISTAKE:

- Do not use whiteout.
- Clearly cross out the entire name that you marked by mistake.
- Fill in the oval to the left of your correct choice, and circle the correct name together with the newly marked oval.



12 Levan #1

Typ:01 Seq:0001 Spl:01

11 12Mona #1

OFFICIAL BALLOT FOR MONA, UTAH NOVEMBER 4, 2025



Alicia Hills

City Recorder

INSTRUCTIONS TO VOTERS: To vote for the candidate of your choice, fill in the oval next to the candidate's name. Use a black or blue ballpoint pen. If you tear, deface, or wrongly mark this ballot, contact the County Clerk's office.

Completely fill in the oval.

Municipal Offices

Mona City Mayor

Vote for One

- ☐ RANDY CHRISTENSEN
- ☐ TROY PAINTER

Mona City Council

Vote for up to Two

- ☐ TROY GORDON LINTON
- ☐ TONY OPENSHAW
- ☐ DEVAN JACK INGRAM
- ☐ JENNIFER DONALDSON

HOW TO MARK YOUR BALLOT

Completely fill in the oval and vote for up to the number allowed

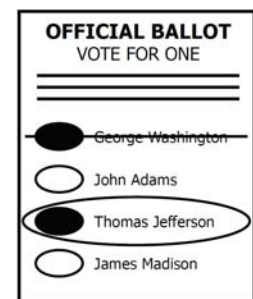
Avoid stray marks and ovals that are not completely filled

Do not sign, initial or make any identifying marks on your ballot



IF YOU MAKE A MISTAKE:

- Do not use whiteout.
- Clearly cross out the entire name that you marked by mistake.
- Fill in the oval to the left of your correct choice, and circle the correct name together with the newly marked oval.



12Mona #1

Typ:01 Seq:0002 Spl:01

11 12Nephi #3

OFFICIAL BALLOT FOR NEPHI, UTAH NOVEMBER 4, 2025



Lisa L. Brumby

City Recorder

INSTRUCTIONS TO VOTERS: To vote for the candidate of your choice, fill in the oval ☒ next to the candidate's name. Use a black or blue ballpoint pen. If you tear, deface, or wrongly mark this ballot, contact the County Clerk's office.

Completely fill in the oval. ☒

Municipal Offices

Nephi City Mayor

Vote for One

☐ JUSTIN D. SEELY

Nephi City Council

Vote for up to Two

☐ JERAMIE L. CALLAWAY

☐ SKIP F. WORWOOD

☐ BART STANLEY MILLER

☐ TATE T. DOUGLAS

HOW TO MARK YOUR BALLOT

Completely fill in the oval and vote for up to the number allowed



Avoid stray marks and ovals that are not completely filled

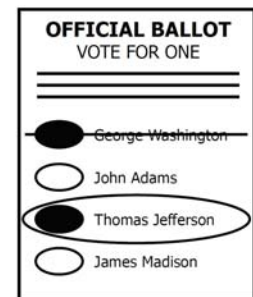


Do not sign, initial or make any identifying marks on your ballot



IF YOU MAKE A MISTAKE:

- Do not use whiteout.
- Clearly cross out the entire name that you marked by mistake.
- Fill in the oval to the left of your correct choice, and circle the correct name together with the newly marked oval.



12Nephi #3

Typ:01 Seq:0004 Spl:01

12Rocky Ridge #1

OFFICIAL BALLOT FOR ROCKY RIDGE, UTAH NOVEMBER 4, 2025



Nora J. Ray

Town Clerk/Recorder

INSTRUCTIONS TO VOTERS: To vote for the candidate of your choice, fill in the oval next to the candidate's name. Use a black or blue ballpoint pen. If you tear, deface, or wrongly mark this ballot, contact the County Clerk's office.

Completely fill in the oval.

Municipal Offices

Rocky Ridge Mayor

Vote for One

- ☐ RONALD ALLRED SR.
- ☐ KATHERINE ROBERTA-MARIE ALLRED

Rocky Ridge Council

Vote for up to Two

- ☐ CLINT A BRONSON
- ☐ BYRON ALLRED
- ☐ TIMOTHY LAYNE ALLRED
- ☐ CHARLES N TODD

HOW TO MARK YOUR BALLOT

Completely fill in the oval and vote for up to the number allowed

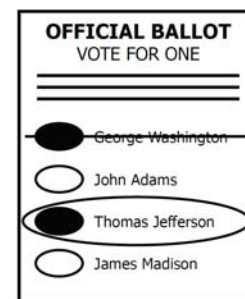
Avoid stray marks and ovals that are not completely filled

Do not sign, initial or make any identifying marks on your ballot



IF YOU MAKE A MISTAKE:

- Do not use whiteout.
- Clearly cross out the entire name that you marked by mistake.
- Fill in the oval to the left of your correct choice, and circle the correct name together with the newly marked oval.



12Rocky Ridge #1

Typ:01 Seq:0009 Spl:01

12Eureka #1

OFFICIAL BALLOT FOR EUREKA, UTAH NOVEMBER 4, 2025



Patricia Bigler

City Recorder

INSTRUCTIONS TO VOTERS: To vote for the candidate of your choice, fill in the oval ☒ next to the candidate's name. Use a black or blue ballpoint pen. If you tear, deface, or wrongly mark this ballot, contact the County Clerk's office.

Completely fill in the oval. ☒

Municipal Offices

Eureka City Mayor

Vote for One

☐ ROBERT W JENKINS

☐ SCOTT C. PUGH

Eureka City Council

Vote for up to Two

☐ **WRITE-IN** Use blank space below

NAME

To vote for a write-in candidate, fill in the oval completely and write the first and last name of the candidate in the blank space above.

☐ **WRITE-IN** Use blank space below

NAME

To vote for a write-in candidate, fill in the oval completely and write the first and last name of the candidate in the blank space above.

HOW TO MARK YOUR BALLOT

Completely fill in the oval and vote for up to the number allowed

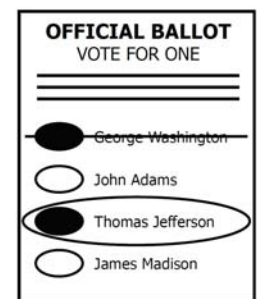
Avoid stray marks and ovals that are not completely filled

Do not sign, initial or make any identifying marks on your ballot



IF YOU MAKE A MISTAKE:

- Do not use whiteout.
- Clearly cross out the entire name that you marked by mistake.
- Fill in the oval to the left of your correct choice, and circle the correct name together with the newly marked oval.



12Eureka #1

Typ:01 Seq:0010 Spl:01